



BEYOND
fire



New!
Fireplace
tools sets
See page 34

www.osburn-mfg.com

BEYOND
EXPECTATIONS

High quality and unique design for your comfort



BEYOND fire

BEYOND... A single word that captures our philosophy and commitment at Osburn. This is our source of inspiration.

What does "BEYOND" mean to Osburn?

BEYOND drives us forward when we look at products. We go beyond with what we do and with our interactions in life. It is more than building and selling products. It's no longer about just doing, but doing with a purpose, doing efficiently. It is about exceeding expectations. BEYOND... drives us to do better, to be more functional and achieve higher performance. We believe great products define a great appliance manufacturer. We are not afraid to take the lead or to stretch the boundaries. When you go BEYOND..., you simply go ahead; you look at the present and envision amazing things happening for the future. That's who we are, our philosophy. Our hope is to share it with you and we invite you to take the time to discover how we go beyond.

The Osburn Team



Volta



Soho
with two-sided pedestal



7000



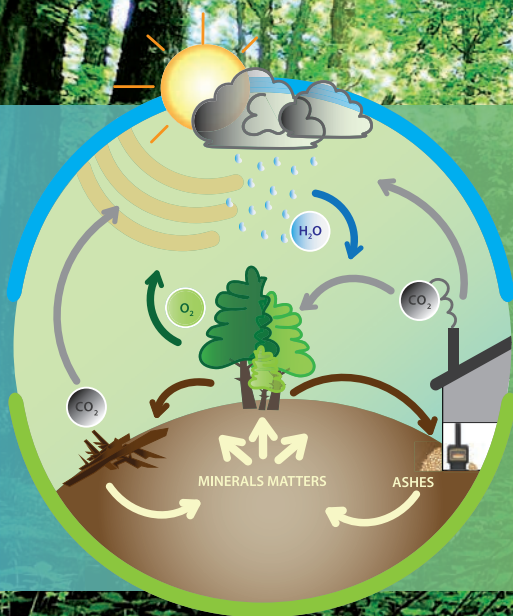
Images in this catalog are for reference only.

Summary



Wood heating and the environment	4
Wood stoves	
900	5
Soho	6
1600	7
2000	8
Matrix	9
2200	10
2300	11
2400	12
Features, technical data and clearances	13
Wood inserts	
1100	15
1600	16
1800	17
2000	18
Matrix	19
2200	20
2400	21
Features, technical data and clearances	22
Zero clearance wood fireplace	
Stratford	24
Features, technical data and clearances	26
Pellet Stoves	
Volta	28
5000	30
7000	32
Features, technical data and clearances	29
	31
	33
Fireplace tool sets	34
Osburn Limited Lifetime Warranty on Robax ceramic glass	35

WOOD HEATING AND THE ENVIRONMENT



When oil, gas, and coal are burned, the carbon they contain is oxidized to carbon dioxide (CO₂), the main greenhouse gas. In effect, the combustion of fossil fuels releases ancient carbon (carbon that has been buried within the earth for thousands of years), thereby increasing the atmospheric concentration of carbon dioxide (CO₂). In comparison, wood combustion can be considered carbon neutral because trees absorb CO₂ as they grow. This process is called carbon sequestration.

Approximately one ton of carbon is sequestered for each cubic meter of wood. When trees mature, die, fall in the forest and decompose, the same amount of carbon is emitted as would be released if they were burned for heat. This cycle can be repeated forever without increasing atmospheric carbon. A healthy forest is not a museum, but a living community of plants and animals. When trees are used for energy, a part of the forests carbon "bank" is diverted from the natural decay and forest cycle into our homes to heat them.

When we heat with wood, we are simply tapping into the natural carbon cycle in which CO₂ flows from the atmosphere to the forest and back. The key to ecologically sound and sustainable wood energy use is to ensure that the forest remains healthy, maintains a stable level of variously aged trees and provides a good habitat for a diversity of other species, both plants and animals. Ensuring there is a healthy fuelwood market is key to a sustainable forestry plan. Landowners have more incentive to remove low value trees and manage their forests sustainably knowing there is a market for this low value material.

The combustion of wood produces small particles that are called PM2.5. Those particles are 30 times smaller than a human hair. They can aggravate certain lung and heart diseases and have been linked with health problems such as asthma. Sources of PM2.5 include combustion under various forms, such as the one used for cars and trucks, wood heating, as well as other industrial processes. While it is true that old technology like open fireplaces and simple heaters could not burn the wood completely, the new generation of wood-burning appliances are designed to burn particles. They produce almost no visible smoke. The woodheating industry has evolved. The vast majority of appliances sold on the market now meet the particles emissions limits set by the US Environmental Protection Agency as well as the Canadian standard CSA B415.1. For example, the Environmental Protection Agency, better known as EPA, limits emissions of certified wood heating appliances to no more than 4.5 grams per hour. In comparison, older conventional wood appliances average 40 grams per hour. Numerous countries, provinces and municipalities, have adopted laws that regulate the sale of wood-heating appliances that do not meet the latest standards in terms of particles emissions. Among them, we can name the United States, Australia, New Zealand, as well as numerous countries that are part of the European Union. In Canada, British Columbia, Quebec, Nova Scotia, New Brunswick and Newfoundland have also introduced laws regulating the sale of wood-heating appliances.

Wood, when burned in an appliance that has been tested to the EPA or CSA B415.1 standards, emits up to 90% less particles. It is a clean, renewable energy source. Furthermore, the reduction in fuelwood consumption reaches up to 33% when advanced wood combustion systems are used. This is because certified wood appliances are 60% to 80% efficient, compared with 40% to 60% for conventional units. As for appliances burning wood pellets, they have amongst the lowest particulate emissions of all solid-fuel burning appliances. They are manufactured from waste products and other renewable resources right here in North America. They represent a huge source of heating fuel from material that would otherwise be sent to landfills.

Example of particles* emissions of a wood stove		* Fines particles < 2.5 microns
CONVENTIONAL WOOD STOVE	EPA CERTIFIED UNIT	
30 to 50 gram./hr. 2 to 3 g/Mj	2 to 4.5 gram./hr. 0.1 to 0.25 g/Mj	** Combustion and heat transfer efficiency
OVERALL EFFICIENCY **		
40-60%	60-80%	



Maximum output,
seasoned cord wood

40,000 BTU/h

Recommended heating area

250 — 1,000 sq. ft. *

Fuel



Size

S



DUPLEX
Fireplace tool sets
See page 34

Osburn 900.

Emissions
3.99 g/h

Optimum efficiency
78.2%

900

BEYOND
SIZE

Osburn is proud to present its 900 model, the smallest wood stove in the Osburn range. The 900 still incorporates the features and the technology of the larger Osburn stoves. This EPA stove packs a lot of heat with style! With an output of up to 40,000 BTU/h, this sturdy heater will keep you warm and toasty. In spite of its size, the 900 takes 17" logs, making it an admired option in the small stove market.



Optional: fire screen.

Firebox volume:
1.3 cu. ft.

Maximum log length:
17".

Exterior dimensions:
25 3/4" H
22 7/8" W
21 7/8" D



Optional: premium quality 100 CFM
blower with variable speed control.

Optional: thermodisc kit.

Optional: quick connect thermodisc.



Optional: fresh air intake kit.

Optional: flexible insulated
fresh air intake pipe
(4' length / 5" diameter).

*See the complete technical data on pages 13 and 14.



EPA
≤4.5 g/h

Maximum output,
seasoned cord wood

55,000 BTU/h

Recommended heating area

500 — 1,500 sq. ft.*

Fuel



Size

M



ABRIK
Fireplace tool sets
See page 34

Soho

Emissions
4.02 g/h

Optimum efficiency
75.3%

Soho with creme enameled decorative side panels and two-sided pedestal.

BEYOND CONTEMPORARY DESIGN

Once again, Osburn innovates to offer you the Soho, a small wood stove with an ultra modern design. This stove, which features an exceptional view of the fire, comes with an easy-to-operate door latch system that compliments the clean lines of the appliance. The Soho can be personalized according to your tastes and décor, thanks to its modular side panels available in different finishes and it offers two convenient and safe pedestal choices to store your logs. This stove can be equipped with an optional blower and thermodisc, in addition to being ready for a fresh air connection kit without the need for any special adaptor. The Soho is an ecological heating appliance that will please those seeking efficiency and contemporary design!



Required accessory: black painted or creme or red enameled decorative side panels.

Firebox volume:
1.7 cu. ft.

Maximum log length:
17".



Required accessory: regular pedestal with ash drawer.

Exterior dimensions:
32 7/8" H
25 3/4" W
20" D



Required accessory: two-sided pedestal and ash drawer.

Exterior dimensions:
32 7/8" H
28 1/2" W
20" D



Optional: premium quality 130 CFM blower with variable speed control (thermodisc included).

Optional: quick connect thermodisc kit.

**Optional: flexible insulated fresh air intake pipe (4' length / 5" diameter).

Size	Fuel	Recommended heating area	Maximum output, seasoned cord wood		
M		500 — 1,800 sq. ft.*	65,000 BTU/h		



FUSIO LOG HOLDER
Fireplace tool sets
See page 34

Osburn 1600 on pedestal with brushed nickel plated door overlay.	Emissions 2.9 g/h	Optimum efficiency 80%
--	----------------------	---------------------------

1600

With its perfect balance between power, efficiency and cleanliness, the Osburn 1600 wood stove is truly unique. Able to heat up to 1,800 square feet with a performance of 65,000 BTU/h., it is also environmentally friendly with emissions as low as 0.87 g/h, well below EPA standards. No compromise is necessary with the 1600 – you choose a pedestal or cast iron legs, then you select a black, golden fire brown, gold plated, or a brushed nickel plated door. Whatever your choice, you'll have a beautifully balanced wood stove.

**BEYOND
COMBUSTION**



Required accessory: black or brushed nickel plated cast iron door overlay.

Firebox volume:
2.0 cu. ft.

Maximum log length:
17".



Required accessory: black or brushed nickel plated cast iron legs.

Exterior dimensions on legs:
31 1/2" H
25" W
26 1/2" D



Required accessory: pedestal and ash drawer with safety lid.

Exterior dimensions on pedestal:
32 3/8" H
25" W
26 1/2" D



Optional: premium quality 130 CFM blower with variable speed control.



**Optional: fresh air intake kit. (pedestal version only)
**Optional: flexible insulated fresh air intake pipe (4' length / 5" diameter).

*See the complete technical data on pages 13 and 14.
**See note 2 on page 13.

Size	Fuel	Recommended heating area	Maximum output, seasoned cord wood	 
L		750 — 2,100 sq. ft.*	75,000 BTU/h	



INEO
Fireplace tool sets
See page 34

2000

BEYOND CHARM

Emissions 3.89 g/h	Optimum efficiency 77.2%	Osburn 2000 with black door overlay.
-----------------------	-----------------------------	--------------------------------------

The Osburn 2000 is one of the most popular unit in the Osburn family of wood stoves. Its cast-iron door, which features the distinctive lines you've come to expect from Osburn, gives it a look combining the contemporary and the traditional. With a 2.4 cubic foot firebox, the Osburn 2000 will delight the most serious of wood stove enthusiasts who want both style and heating power. Also equipped with a 130 CFM blower, the Osburn 2000 is the most sought-after model of the season!



Required accessory: black or brushed nickel plated cast iron door overlay.

Firebox volume:
2.4 cu. ft.

Maximum log length:
20".

Optional fire screen.



Required accessory: black or brushed nickel plated cast iron legs.

Exterior dimensions on legs:
32 3/8" H x 27" W x 30" D

Exterior dimensions on pedestal:
34 3/4" H x 27" W x 30" D



Optional: pedestal and ash drawer with safety lid.

Optional: thermodisc kit.

Optional: quick connect thermodisc.



Premium quality 130 CFM blower with variable speed control included.



**Optional: fresh air intake kit.
**Optional: flexible insulated fresh air intake pipe (4' length / 5" diameter).

*See the complete technical data on pages 13 and 14
**See note 2 on page 13.



EPA
≤ 4.5 g/h

Maximum output,
seasoned cord wood

75,000 BTU/h

Recommended heating area

750 — 2,100 sq. ft.*

Fuel



Size

L



ABRIK
Fireplace tool sets
See page 34

Matrix with soapstone panels.

Emissions
3.89 g/h

Optimum efficiency
77.2%

Matrix

BEYOND

CONTEMPORARY

The Matrix wood stove's clean and modern lines is sure to bring a European touch to any room. Inspired by the renowned finnish fireplaces, the top of the stove includes two rich pieces of soapstone. These canadian mined soapstones are also available as side panels kit that brings elegance to another level. Logs can be conveniently placed underneath the large firebox, making the Matrix not only stylish, but practical.



Optional: soapstone or black painted panel kits.

Firebox volume:
2.4 cu. ft.

Maximum log length:
20".



Reversible door (hinged on left or right).

Ash pan with safety lid.

Exterior dimensions:
36 7/8" H
27 1/8" W
25 5/8" D



Premium quality 130 CFM blower with variable speed control included.

Quick connect thermdisc included.

**Fresh air intake adapter included.



Optional: fire screen.

**Optional: flexible insulated fresh air intake pipe (4' length / 5" diameter).

*See the complete technical data on pages 13 and 14.

**See note 2 on page 13.

Size	Fuel	Recommended heating area	Maximum output, seasoned cord wood	 
L		750 — 2,000 sq. ft.*	70,000 BTU/h	



SILHOUETTE
Fireplace tool sets
See page 34

2200

Emissions
2.74 g/h

Optimum efficiency
76%

Osburn 2200 with brushed nickel plated door overlay and brushed nickel plated louver and trivet.

BEYOND STYLE

Although similar in many ways to the 1800 model, the 2200 stove is suited for intensive, continuous use. Its 20% larger firebox is designed to maintain steady heat over a longer period. A powerful, premium quality 130 CFM blower is available as an option. The glass surface of the bay window is also 20% larger than that of the 1800 model, providing a wonderful view of the fire from every angle. In short, the Osburn 2200 offers a perfect combination of utility and enjoyment!

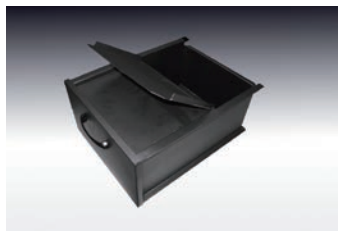


Required accessory: black or brushed nickel plated cast iron door overlay.

Required accessory: black or brushed nickel plated louver and trivet

Firebox volume:
2.3 cu. ft.

Maximum log length:
18".



Ash drawer with safety lid.

Exterior dimensions:
32 1/8" H
26" W
26 1/4" D



Optional: premium quality 130 CFM blower with variable speed control.



**Optional: fresh air intake kit.

**Optional: flexible insulated fresh air intake pipe (4' length / 5" diameter).



Maximum output,
seasoned cord wood

Recommended heating area

Fuel

Size

90,000 BTU/h

900 — 2,300 sq. ft.*



X-L



PAPYRUS
Fireplace tool sets
See page 34



Osburn 2300 with brushed nickel plated cast iron door overlay and legs.

Emissions
4.47 g/h

Optimum efficiency
75%

2300

The Osburn 2300 is designed for intensive use. The depth of its firebox and the large door opening makes wood loading easy, with logs up to 20 inches. Its hidden hinges and very large glass surface embellish its use. Each 2300 model is equipped with an premium quality blower. The secondary air pipes and C-Cast baffle ensure combustion of the highest quality.

**BEYOND
PERFORMANCE**



Required accessory: black or brushed nickel plated cast iron door overlay.

Firebox volume:
3.4 cu. ft.

Maximum log length:
20".



Required accessory: black or brushed nickel plated cast iron legs.

Exterior dimensions:

On legs	On pedestal
33" H	33 5/8" H
25 3/4" W	25 3/4" W
34 7/8" D	34 7/8" D



Optional: pedestal and ash drawer with safety lid.

Optional: thermdisc kit.

Optional: quick connect thermdisc.



Premium quality 100 CFM blower with variable speed control included.



**Optional: fresh air intake kit.

**Optional: flexible insulated fresh air intake pipe (4' length / 5" diameter).

*See the complete technical data on pages 13 and 14.

**See note 2 on page 13

Size	Fuel	Recommended heating area	Maximum output, seasoned cord wood		
X-L		1,000 – 2,700 sq. ft.*	100,000 BTU/h		



2400

Emissions	Optimum efficiency
3.9 g/h	78%

Osburn 2400 with brushed nickel plated door overlay.

BEYOND HEAT

Some of the Osburn 2400's impressive features include a 3.2 cubic foot firebox; a Recommended heating area that's up to 2,700 square feet; it takes logs up to 21"; and burns up to 10 hours in low combustion mode*. In addition to its impressive performance, the 2400 is environmentally efficient, with emissions as low as 1.6 g/h (in medium-high combustion mode). If you're looking for a large wood stove for your home or cottage, the Osburn 2400 is a perfect choice.



Required accessory: black or brushed nickel plated cast iron door overlay.

Firebox volume:
3.2 cu. ft.

Maximum log length:
21".



Pedestal and ash drawer with safety lid.

Exterior dimensions:
33" H
30" W
30 5/8" D



Optional: premium quality 130 CFM blower with variable speed control.



**Optional: fresh air intake kit.

**Optional: flexible insulated fresh air intake pipe (4' length / 5" diameter).

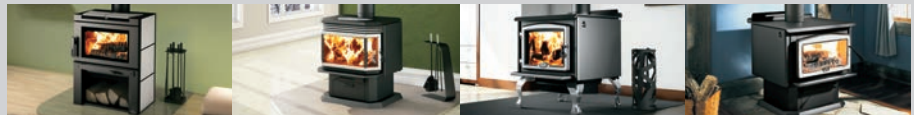
*See the complete technical data on pages 13 and 14.
**See note 2 on page 13.

Technical data: Wood stoves

GENERAL FEATURES: WOOD STOVES



MODELS	900	Soho	1600	2000
Color	Metallic Black	Metallic Black	Metallic Black	Metallic Black
Maximum burn time (note 1)	3 to 5 hours	5 to 6 hours	5 to 8 hours	6 to 8 hours
Combustion technology	Non-catalytic	Non-catalytic	Non-catalytic	Non-catalytic
Recommended heating area (note 1)	250 to 1,000 sq. ft	500 to 1,500 sq. ft	500 to 1,800 sq. ft	750 to 2,100 sq. ft
Maximum output - EPA test wood (BTU/h)	21,800	23,275	42,600	32,200
Maximum output - seasoned cord wood (BTU/h)	40,000	55,000	65,000	75,000
Door opening size (W x H)	15" x 7 5/8"	15 3/4" x 7 1/4"	15 5/8" x 8 3/8"	17 1/2" x 9"
Firebox dimensions (W x H x D)	18 3/8" x 9 5/8" x 12 1/2"	18 1/8" x 12 1/4" x 13 1/2"	18 1/8" x 12 7/8" x 14 3/4"	21" x 11 7/8" x 16 3/4"
Firebox volume	1.3 cu. ft.	1.7 cu. ft.	2.0 cu. ft.	2.4 cu. ft.
Average particulate emissions rate	3.99 g/h	4.02 g/h	4.4 g/h	3.89 g/h
Glass viewing area (W x H)	13 3/8" x 7 3/4"	16 1/4" x 8 1/4"	15" x 8 3/8"	17 1/4" x 9 1/2"
Door frame	Cast iron with logo	Steel	Cast iron with logo	Cast iron with logo
Maximum log length	17"	17"	17"	20"
Optimum efficiency	78.2%	75.3%	80%	77.2%
Mobile home approved (note 2)	No	Yes	Yes	Yes
Approved for an alcove installation	Yes	No	No	No
Flue spigot diameter	6"	6"	6"	6"
Glass type	Ceramic glass			
Adjustable handle	Yes			
Self-cleaning glass system	Yes			
Ash drawer with safety lid	Yes (all freestanding wood stoves) except Osburn 900			
Warranty	Lifetime, limited			
Test standard - Safety	According to ULC S627, UL 1482, UL 737, NFPA 211 and CSA B365 standards applicable in Canada and USA			
Test standard - Emissions / efficiency	EPA / CSA B415.1			



MODELS	Matrix	2200	2300	2400
Color	Metallic Black	Metallic Black	Metallic Black	Metallic Black
Maximum burn time (note 1)	6 to 8 hours	6 to 8 hours	9 to 10 hours	9 to 10 hours
Combustion technology	Non-catalytic	Non-catalytic	Non-catalytic	Non-catalytic
Recommended heating area (note 1)	750 to 2,100 sq. ft	750 to 2,000 sq. ft	900 to 2,300 sq. ft	1,000 to 2,700 sq. ft
Maximum output - EPA test wood (BTU/h)	32,200	30,400	26,400	44,126
Maximum output - seasoned cord wood (BTU/h)	75,000	70,000	90,000	100,000
Door opening size (W x H)	17 1/2" x 8 3/4"	19 1/8" x 8 7/8"	15 1/2" x 11 1/2"	19 1/2" x 8"
Firebox dimensions (W x H x D)	21" x 12" x 16 1/2"	19 1/8" x 12 1/4" x 17 1/4"	18 3/8" x 14 7/8" x 21 1/4"	22 1/2" x 13 1/2" x 19 3/8"
Firebox volume	2.4 cu. ft.	2.3 cu. ft.	3.4 cu. ft.	3.2 cu. ft.
Average particulate emissions rate	3.89 g/h	2.74 g/h	4.47 g/h	3.9 g/h
Glass viewing area (W x H)	19 5/8" x 11 7/8"	26 1/4" x 10 3/8"	15 1/8" x 10 7/8"	19 1/8" x 8 7/8"
Door frame	Cast iron, reversible	Steel	Cast iron with logo	Cast iron with logo
Maximum log length	20"	18"	20"	21"
Optimum efficiency	77.2%	76%	75%	78%
Mobile home approved (note 2)	Yes	Yes	Yes	Yes
Approved for an alcove installation	No	No	No	No
Flue spigot diameter	6"	6"	6"	6"
Glass type	Ceramic glass			
Adjustable handle	Yes			
Self-cleaning glass system	Yes			
Ash drawer with safety lid	Yes (all freestanding wood stoves) except Osburn 900			
Warranty	Lifetime, limited			
Test standard - Safety	According to ULC S627, UL 1482, UL 737, NFPA 211 and CSA B365 standards applicable in Canada and USA			
Test standard - Emissions / efficiency	EPA / CSA B415.1			

Note 1 : Recommended heating area and maximum burn time may vary subject to location in home, chimney draft, heat loss factors, climate, fuel type and other variables. The recommended heated area for a given appliance is defined by the manufacturer as its capacity to maintain a minimum acceptable temperature in the designated area in case of a power failure.

Note 2 : With fresh air intake kit.

SPECIFIC FEATURES: WOOD STOVES

MODELS	900	Soho	1600	2000	Matrix	2200	2300	2400
Exterior dimensions and weight								
Height (pedestal)	N/A	32 7/8"	32 3/8"	34 3/4"	36 7/8"	32 1/8"	33 5/8"	33"
Height (legs)	25 3/4"	N/A	31 1/2"	32 3/8"	N/A	N/A	33"	N/A
Width (pedestal/two-sided pedestal)	N/A	25 3/4" / 28 1/2"	25"	27"	27 1/8"	26"	25 3/4"	30"
Width (legs)	22 7/8"	N/A	25"	27"	N/A	N/A	25 3/4"	N/A
Depth (pedestal)	N/A	20"	26 1/2"	30"	25 5/8"	26 1/4"	34 7/8"	30 5/8"
Depth (legs)	21 7/8"	N/A	26 1/2"	30"	N/A	N/A	34 7/8"	N/A
Weight	269 lb (122 kg)	326 lb (148 kg)	357 lb (162 kg)	399 lb (181 kg)	534 lb (242 kg)	387 lb (181 kg)	443 lb (201 kg)	525 lb (238 kg)
Clearances from unit to combustible materials (figures 1, 2, and 3)								
With single wall pipe (note 3)								
A— Sides (Canada / USA)	18"	16"	16"	17"	16"	17"	12"	17" / 18"
B— Back (Canada / USA)	15 1/4" x 15"	15"	15"	15"	15"	16"	15" / 12"	14" / 16"
C— Corner (Canada / USA)	10"	8 1/2" / 8"	12"	10"	10"	10"	10"	8" / 12"
With double wall pipe								
A— Sides (Canada / USA)	18"	16"	16" / 20"	17"	14"	21"	12"	15" / 17"
B— Back (Canada / USA)	10"	12"	6"	8"	6"	5"	6"	7" / 12"
C— Corner (Canada / USA)	10"	6"	6"	5"	6"	3"	10"	7"
D— Ceiling (Canada / USA) - (note 4)	84"	84"	84"	84"	84"	84"	84"	84"

Options

Blower	Optional	Optional	Optional	Included	Included	Optional	Included	Optional
Black door overlay	Included	Included	Optional	Optional	Included	Optional	Optional	Optional
Brushed nickel plated door overlay	N/A	N/A	Optional	Optional	N/A	Optional	Optional	Optional
Pedestal	N/A	Optional	Optional	Optional	Included	Included	Optional	Included
Black cast iron legs	Included	N/A	Optional	Optional	N/A	N/A	Optional	N/A
Brushed nickel plated cast iron legs	N/A	N/A	Optional	Optional	N/A	N/A	Optional	N/A
Black louver and trivet	N/A	N/A	N/A	N/A	N/A	Optional	N/A	N/A
Brushed nickel plated lower and trivet	N/A	N/A	N/A	N/A	N/A	Optional	N/A	N/A
Soapstone panel kit	N/A	N/A	N/A	N/A	Optional	N/A	N/A	N/A
Black decorative side panels	N/A	Optional	N/A	N/A	Optional	N/A	N/A	N/A
Red enameled decorative side panels	N/A	Optional	N/A	N/A	Optional	N/A	N/A	N/A
Creme enameled decorative side panels	N/A	Optional	N/A	N/A	N/A	N/A	N/A	N/A

Note 3: Consult local code for minimum clearances of the single wall pipe itself to combustible materials. See also the venting manufacturer's instructions.

Note 4: Measured from the base of the appliance. Some appliances have been tested with a low ceiling. If necessary, consult the owner's manual for information on these clearances to combustible materials.

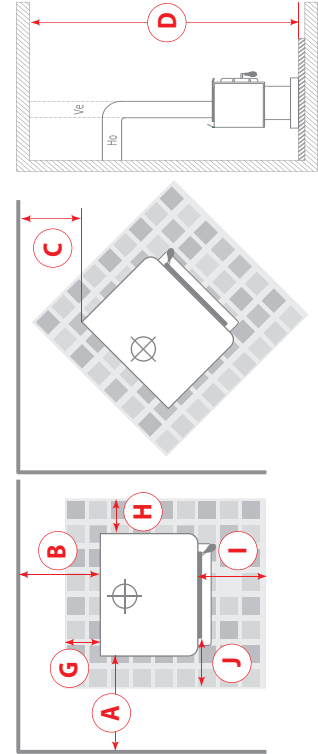


Figure 1

	FLOOR PROTECTOR*	
	CANADA	USA
G	8" - Note **	N/A (Canada only)
H	8"	N/A (Canada only)
I	18" From door opening	16" From door opening
J	N/A (USA only)	8" From door opening

*Steel with a minimum thickness of 0.015" (0.38 mm) or ceramic tiles sealed together with grout. No protection is required if the unit is installed on a non-combustible floor (ex: concrete).

**The floor protection at the back of the stove is limited to the stove's required clearance if such clearance is smaller than 8 inches (203 mm).

Technical data contained in this brochure are for reference only. Any installation must be done according to the data and drawings detailed in the Owner's manual.

Figure 3

Figure 2

EPA
≤4.5 g/h

Maximum output,
seasoned cord wood

50,000 BTU/h

Recommended heating area

250 — 1,400 sq. ft.*

Fuel



Size

S



Osburn 1100 insert with brushed nickel plated door overlay and black faceplate and trims.

Emissions
2.9 g/h

Optimum efficiency
75%

1100
Insert

The 1100 insert is the ready-made solution for smaller masonry fireplaces. With its flue at a 45° angle, it offers a wide range of configurations. The floor of its firebox is 2.5 inches deep, allowing greater accumulation of ashes and cleaner use. The 1100 insert also comes with a powerful 120 CFM blower. You'll be amazed and delighted by the 50,000 BTU of heat it provides!

BEYOND
FLEXIBILITY



Required accessory: black or brushed nickel plated cast iron door overlay.

Firebox volume:
1.5 cu. ft.

Maximum log length:
17".

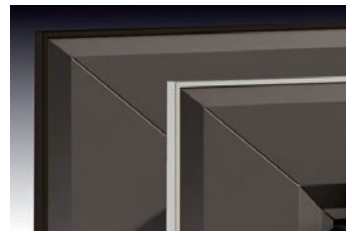


Premium quality 120 CFM heat activated blower with variable speed control included.

Exterior dimensions:
21 1/8" H
25 1/2" W
22 1/4" D



Required accessory: black faceplate kit. Regular (29" X 44").



Optional: black or brushed nickel faceplate trims. Regular (29" X 44").

*See the complete technical data on pages 22 and 23.

Size	Fuel	Recommended heating area	Maximum output, seasoned cord wood	EPA ≤4.5 g/h
M		500 — 1,800 sq. ft.*	65,000 BTU/h	



1600
Insert

Emissions
4.4 g/h

Optimum efficiency
80%

Osburn 1600 insert with brushed nickel plated door overlay and black faceplate trims.

BEYOND
COMBUSTION

With its compact design, the 1600 insert can be installed in a fireplace as small as 14 3/8" deep. Yet it offers a performance of up to 65,000 BTU/h and burns 17" logs. The standard 130 CFM blower helps maximize the stove's energy performance. The very low emissions at normal operating temperatures, positions the 1600 insert as an excellent choice for those seeking an environmentally friendly and ultra-efficient source of heat.



Required accessory: black or brushed nickel plated cast iron door overlay.

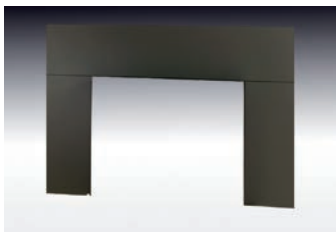
Firebox volume:
2.0 cu. ft.

Maximum log length:
17".

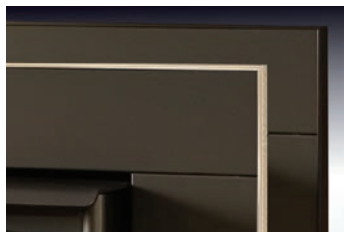


Premium quality 130 CFM heat activated blower with variable speed control included.

Exterior dimensions:
22 5/8" H
25 7/8" W
26" D



Required accessory:
black faceplate kits.
Regular (29" X 44"),
Medium (32" X 44") or
Large (32" X 50").



Optional: black or brushed nickel faceplate trims.
Regular (29" X 44"),
Medium (32" X 44") or
Large (32" X 50").

*See the complete technical data on pages 22 and 23.

EPA
≤4.5 g/h

Maximum output,
seasoned cord wood

Recommended heating area

Fuel

Size

65,000 BTU/h 500 — 1,800 sq. ft.*



M



Osburn 1800 insert with black door overlay and trims with black faceplate kit.

Emissions
2.8 g/h

Optimum efficiency
75%

1800
Insert

Like its cousins in the 1800/2200 freestanding series, the 1800 insert offers the same tried-and tested design and the same great features, including a magnificent view of the fire through the bay window. It is also equipped with a powerful blower, transforming your old, inefficient fireplace into a highly effective heating system. The 1800 insert is both practical and elegant. It is a perfect choice to upgrade your living room or basement fireplace.

BEYOND
CHARACTER



Required accessory: black or brushed nickel plated cast iron door overlay.

Firebox volume:
1.8 cu. ft.

Maximum log length:
16".



Premium quality 110 CFM heat activated blower with variable speed control included.

Exterior dimensions:
20 3/8" H
30" W
25 3/8" D



Required accessory: black faceplate kits. Regular (29" X 44") or Medium (32" X 44").



Optional: black or brushed nickel faceplate trims. Regular (29" X 44") or Medium (32" X 44").

*See the complete technical data on pages 22 and 23.

Size

Fuel

Recommended heating area

Maximum output,
seasoned cord wood

EPA
≤ 4.5 g/h

L



750 — 2,100 sq. ft.*

75,000 BTU/h



TORSADE
Fireplace tool sets
See page 34

2000
Insert

Emissions
3.89 g/h

Optimum efficiency
77.2%

Osburn 2000 insert with brushed
nickel plated door overlay and
trims and black faceplate kit.

BEYOND
CHARM

With its 2.4 cubic foot firebox, the Osburn 2000 insert offers an alternative to the people who love its freestanding counterpart. The two models share the same high quality combustion properties and many of the same features. The Osburn 2000 comes with a standard high-power, heat-activated 120 CFM blower strategically positioned to redistribute the heat from the firebox into the room. The 2000 model is designed to receive an optional faceplate that can cover a masonry hearth up to 32 inches (81 cm) high and 50 inches (127 cm) wide. The door overlay is available in black or brushed nickel plated finishes. The faceplate trims are available in black or brushed nickel.



Required accessory: black or brushed
nickel plated cast iron door overlay.

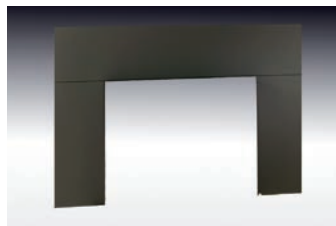
Firebox volume:
2.4 cu. ft.

Maximum log length:
20".



Premium quality 120 CFM
heat activated blower with variable
speed control included.

Exterior dimensions:
23 1/8" H
28 3/8" W
26 1/2" D

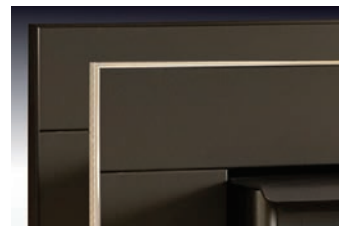


Required accessory: black
faceplate kits.
Regular (29" X 44") or
Large (32" X 50").



Optional: fire screen.

Optional: fresh air intake kit.



Optional: black or brushed nickel
faceplate trims.
Regular (29" X 44") or
Large (32" X 50").



Optional: heat shield mantle shelf
and combustible top surround.

EPA
≤4.5 g/h

Maximum output,
seasoned cord wood

Recommended heating area

Fuel

Size

75,000 BTU/h 750 — 2,100 sq. ft.*



L



SILHOUETTE
Fireplace tool sets
See page 34

Matrix insert with cast iron faceplate.

Emissions
3.89 g/h

Optimum efficiency
77.2%

Matrix
Insert

The Matrix wood insert defines the new standards for contemporary look and performance. This appliance looks like a fireplace, but has all the advantages of an insert. Its faceplate and blower assembly were developed to allow a flush finish with the masonry fireplace. Cast iron was selected as the material of choice for this clean and modern unit. Installation into larger openings is facilitated by the use of an optional sheet metal backing plate. This insert will surely become the focal point of the room.

**BEYOND
CONTEMPORARY**



Reversible cast iron door
(hinged on left or right).

Firebox volume:
2.4 cu. ft.

Maximum log length:
20".

Cast iron faceplate (included):
25 1/4" H x 36 1/8" W



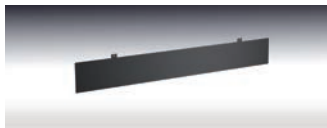
Optional: fire screen.

Exterior dimensions:
With faceplate (included):
25 1/8" H
36 1/8" W
23 1/8" D

Without faceplate:
23 3/8" H
28 3/8" W
23 1/8" D



Optional: faceplate backing plate panels (29" x 44" / 29" x 50").



Optional: bottom faceplate backing plate panels (44" x 6" / 50" x 6").

Optional: fresh air intake kit.



Projection kit for insert 2" or 4".
Requires the optional faceplate backing plate for installation.



Premium quality 110 CFM heat activated blower included.

*See the complete technical data on pages 22 and 23.

Size	Fuel	Recommended heating area	Maximum output, seasoned cord wood	
L		750 — 2,000 sq. ft.*	70,000 BTU/h	



INEO
Fireplace tool sets
See page 34

2200
Insert

Emissions
2.74 g/h

Optimum efficiency
76%

Osburn 2200 with black cast iron door overlay, faceplate kit and trims.

**BEYOND
STYLE**

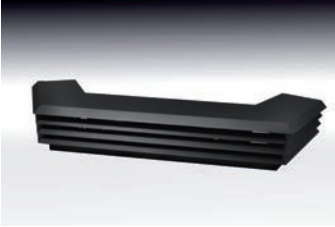
The 2200 insert, with its focus on efficiency and elegance, is an excellent example of Osburn's know-how. The bay window adds a touch of style to your fireplace and also improves its heat output. The 2200 insert is designed to offer a long Maximum burn time in low combustion mode, and can provide comfort for many hours – even overnight* – thanks among other things to its premium quality blower. The Osburn 2200 insert offers superior features in an eye-catching, high performance wood insert.



Required accessory: black or brushed nickel plated cast iron door overlay.

Firebox volume:
2.3 cu. ft.

Maximum log length:
18".



Premium quality 130 CFM heat activated blower with variable speed control included.

Exterior dimensions:
23 1/8" H
32 7/8" W
28 3/8" D



Required accessory: black faceplate kits. Regular (29" X 44"), Medium (32" X 44") or Large (32" X 50").



Optional: black or brushed nickel faceplate trims. Regular (29" X 44"), Medium (32" X 44") or Large (32" X 50").

*See the complete technical data on pages 22 and 23.

EPA
≤4.5 g/h

Maximum output, seasoned
cord wood

Recommended heating area

Fuel

Size

100,000 BTU/h 1,000 – 2,700 sq. ft.*



X-L



Osburn 2400 with brushed nickel plated door overlay, black faceplate kit and trims.

Emissions
3.5 g/h

Optimum efficiency
78%

2400
Insert

The 2400 insert has the same firebox as its freestanding counterpart and will transform any conventional masonry fireplace into a highly efficient heating system. Its 100,000 BTU/h, combined with a 3.2 cubic foot firebox, will help you to rest easy during those long winter nights. Its large glass window offers a perfect view of the fire.

BEYOND
HEAT



Required accessory: black or brushed nickel plated cast iron door overlay.

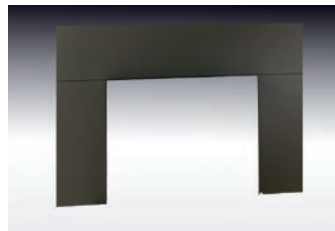
Firebox volume:
3.2 cu. ft.

Maximum log length:
21".

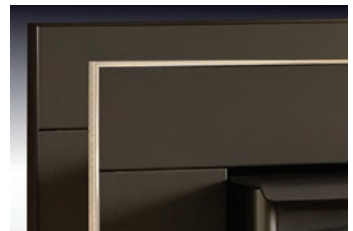


Premium quality 120 CFM heat activated blower with variable speed control included.

Exterior dimensions:
23" H
31 1/8" W
28" D



Required accessory:
black faceplate kits.
Regular (29" X 44"),
Medium (32" X 44") or
Large (32" X 50").



Optional: black or brushed nickel faceplate trims.
Regular (29" X 44"),
Medium (32" X 44") or
Large (32" X 50").

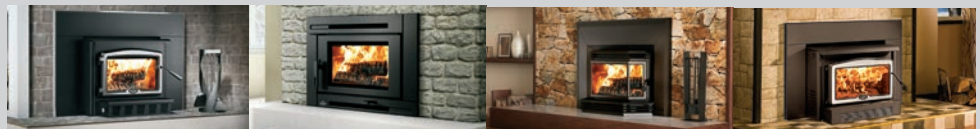
*See the complete technical data on pages 22 and 23.

Technical data: Wood inserts

GENERAL FEATURES: WOOD INSERTS



MODELS	1100 Insert	1600 Insert	1800 Insert
Color	Metallic Black	Metallic Black	Metallic Black
Maximum burn time (Note 1)	3 to 6 hours	5 to 8 hours	5 to 8 hours
Combustion technology	Non-catalytic	Non-catalytic	Non-catalytic
Recommended heating area (Note 1)	250 to 1,400 sq. ft	500 to 1,800 sq. ft	500 to 1,800 sq. ft
Maximum output - EPA test wood (BTU/h)	35,000	42,600	36,300
Maximum output - seasoned cord wood (BTU/h)	50,000	65,000	65,000
Door opening size (W x H)	15 5/8" x 8 1/2"	15 5/8" x 8 1/2"	18 3/8" x 8 1/2"
Firebox dimensions (W x H x D)	18 1/8" x 11 1/2" x 12 5/8"	18 1/8" x 12 7/8" x 14 3/4"	16 7/8" x 11 1/2" x 14 5/8"
Firebox volume	1.5 cu. ft.	2.0 cu. ft.	1.8 cu. ft.
Average particulate emissions rate	2.9 g/h	4.4 g/h	2.8 g/h
Glass viewing area (W x H)	15" x 8 3/8"	15" x 8 3/8"	22 3/4" x 9 3/8"
Door frame	Cast iron with logo	Cast iron with logo	Steel
Maximum log length	17"	17"	16"
Optimum efficiency	75%	80%	75%
Flue spigot diameter	6"	6"	6"
Glass type	Ceramic glass		
Adjustable handle	Yes		
Self-cleaning glass system	Yes		
Warranty	Lifetime, limited		
Test standard - Safety	According to UL 1482, UL 737, ULC S628, NFPA 211 and CSA B365 applicable in Canada and the United States		
Test standard - Emissions / efficiency	EPA / CSA B415.1		



MODELS	2000 Insert	Matrix Insert	2200 Insert	2400 Insert
Color	Metallic Black	Metallic Black	Metallic Black	Metallic Black
Maximum burn time (Note 1)	6 to 8 hours	6 to 8 hours	6 to 8 hours	8 to 10 hours
Combustion technology	Non-catalytic	Non-catalytic	Non-catalytic	Non-catalytic
Recommended heating area (Note 1)	750 to 2,100 sq. ft	750 to 2,100 sq. ft	750 to 2,000 sq. ft	1,000 to 2,700 sq. ft
Maximum output - EPA test wood (BTU/h)	32,200	32,200	30,425	44,100
Maximum output - seasoned cord wood (BTU/h)	75,000	75,000	70,000	100,000
Door opening size (W x H)	17 1/2" x 8 7/8"	17 1/2" x 8 3/4"	19 1/8" x 9"	19 3/8" x 8"
Firebox dimensions (W x H x D)	21" x 11 7/8" x 16 3/4"	21" x 11 7/8" x 16 1/2"	19 1/8" x 12 1/4" x 17 1/4"	22 1/2" x 13 1/2" x 19 3/8"
Firebox volume	2.4 cu. ft.	2.4 cu. ft.	2.3 cu. ft.	3.2 cu. ft.
Average particulate emissions rate	3.89 g/h	3.89 g/h	2.74 g/h	3.5 g/h
Glass viewing area (W x H)	17 1/4" x 9 1/2"	19 5/8" x 11 7/8"	26 1/4" x 10 3/8"	19 1/8" x 8 7/8"
Door frame	Cast iron with logo	Cast Iron	Steel	Cast iron with logo
Maximum log length	20"	20"	18"	21"
Optimum efficiency	77.2%	77.2%	76%	78%
Flue spigot diameter	6"	6"	6"	6"
Glass type	Ceramic glass			
Adjustable handle	Yes			
Self-cleaning glass system	Yes			
Warranty	Lifetime, limited			
Test standard - Safety	According to UL 1482, UL 737, ULC S628, NFPA 211 and CSA B365 applicable in Canada and the United States			
Test standard - Emissions / efficiency	EPA / CSA B415.1			

Note 1: Recommended heating area and maximum burn time may vary subject to location in home, chimney draft, heat loss factors, climate, fuel type and other variables. The recommended heated area for a given appliance is defined by the manufacturer as its capacity to maintain a minimum acceptable temperature in the designated area in case of a power failure.

SPECIFIC FEATURES: WOOD INSERTS

MODELS	1100 Insert	1600 Insert	1800 Insert	2000 Insert	Matrix Insert	2200 Insert	2400 Insert
Exterior dimensions and weight							
Height	21 1/8"	22 5/8"	20 3/8"	23 1/8"	23 3/8"	23 1/8"	23"
Width	25 1/2"	25 7/8"	30"	28 3/8"	28 3/8"	32 7/8"	31 1/8"
Depth	22 1/4"	26"	25 3/8"	26 1/2"	23 1/8"	28 3/8"	28"
Weight	280 lb (128 kg)	368 lb (167 kg)	300 lb (137 kg)	435 lb (197 kg)	474 lb (215 kg)	383 lb (174 kg)	504 lb (229 kg)
Clearances from unit to combustible materials (see figure 1)							
A- Adjacent sidewall	13"	16"	17"	16"	16"	17"	14"
B- Combustible side surround	9"	10"	10"	12"	12"	10"	8"
C- Combustible top surround	27"	16"	14"	20"	20"	14"	20 1/2"
Reduced clearance with heat shield for combustible top surround	N/A	N/A	N/A	11"	N/A	N/A	N/A
D- Combustible mantle shelf	27"	22"	22"	22"	22"	22"	25 1/2"
Reduced clearance with heat shield for combustible mantle shelf	N/A	N/A	N/A	12"	N/A	N/A	N/A
E- Minimum floor protection in front of unit (CAN / USA)	18" / 16"	18" / 16"	18" / 16"	18" / 16"	18" / 16"	21 5/8" / 21 5/8" **	18" / 16"
F, G, H- Minimum fireplace opening (Height x Width x Depth)	21 3/4" x 26" x 12 7/8"	22 1/8" x 26 3/8" x 14 3/8"	20" x 23 3/8" x 14 5/8"	23 3/8" x 28 7/8" x 15 3/4"	23 3/4" x 28 7/8" x 19 5/8"*	22 5/8" x 26 1/4" x 17 3/8"	23 1/2" x 31 5/8" x 16 1/4"
I- Maximum projection of shelf	N/A	N/A	N/A	8"	N/A	N/A	N/A
Projection into the room, minimum / maximum	7" / 7"	3 1/4" / 5 3/4"	10 1/2" / 10 1/2"	3 1/8" / 5 1/4"	2" / 4"	N/A	6 1/4" / 7"
Faceplate dimensions							
Regular in cast iron (included)	N/A	N/A	N/A	N/A	25 1/4" x 36 1/8"	N/A	N/A
Regular in steel	29" x 44"	29" x 44"	29" x 44"	29" x 44"	N/A	29" x 44"	29" x 44"
Medium in steel	N/A	32" x 44"	32" x 44"	N/A	N/A	32" x 44"	32" x 44"
Large in steel	N/A	32" x 50"	N/A	32" x 50"	N/A	32" x 50"	32" x 50"
Faceplate trim kit	Black or brushed nickel	Black or brushed nickel	Black or brushed nickel	Black or brushed nickel	Black or brushed nickel	Black or brushed nickel	Black or brushed nickel
Faceplate backing plate panels	N/A	N/A	N/A	N/A	29" x 44" / 29" x 50"	N/A	N/A
Bottom faceplate backing plate panels	N/A	N/A	N/A	N/A	44" x 6" / 50" x 6"	N/A	N/A
Projection kit	N/A	N/A	N/A	N/A	2" or 4"	N/A	N/A
Options							
Blower	Included	Included	Included	Included	Included	Included	Included
Black door overlay	Optional	Optional	Optional	Optional	Included	Optional	Optional
Brushed nickel plated door overlay	Optional	Optional	Optional	Optional	Included	Optional	Optional

* The depth of the fireplace opening of the Matrix Insert can be reduced to 17 5/8" or 15 5/8" using the optional projection kit AC01323, sold separately. Note however that in order to install the optional projection kit AC01323, one of the optional faceplate backing plate kit AC01322 or AC01332 must be purchased separately to secure the projection kit to it.

**This model in particular must have 16" in front of the blower housing. This distance is included in the "E" measurement of the above table.

Technical data & sizes contained in this brochure are for reference only. Any installation must be done according to the data and drawings detailed in the Owner's manual.

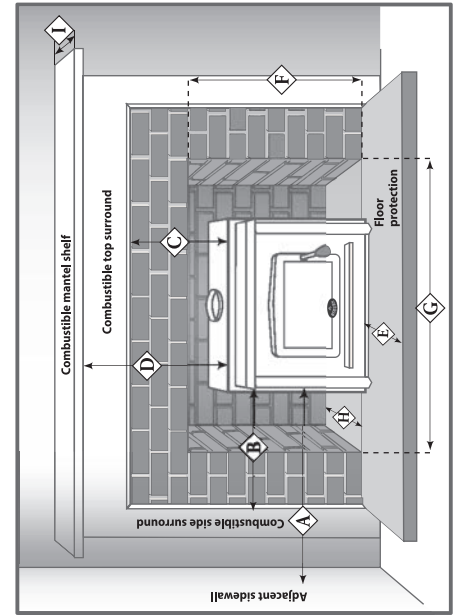


Figure 1

E From door opening

Size	Fuel	Recommended heating area	Maximum output, seasoned cord wood	
L		750 — 2,100 sq. ft. *	75,000 BTU/h	



EQUISS LOG HOLDER
Fireplace tool sets
 See page 34

Stratford	Emissions	Optimum efficiency	Stratford with brushed nickel plated cast iron door overlay and Prairie style faceplate.
	4.4 g/h	77%	

**BEYOND
 DESIGN**

Here's what you've been hoping to find, a decorative and efficient wood fireplace that meets EPA emissions standards. That's saying a lot, but the Osburn Stratford has much more to offer, including a 2.5 cubic foot firebox that's easy to access through double-cast iron doors. The Osburn Stratford will impress you with its distinctive style and exceptional Recommended heating area. Several options are available, including a air distribution systems for heating adjacent rooms (see page 27). With the Osburn Stratford, there's a world of possibilities waiting for you!



Required accessory: black or brushed nickel plated cast iron door overlay.

Optional faceplate: Prairie-style, traditional or traditional with brushed nickel plated accents.

Firebox volume:
 2.5 cu. ft.



Optional: fire screen.

Exterior dimensions:
 47 1/8" H
 37 7/8" W
 29 5/8" D

Maximum log length:
 21".



Optional: forced air distribution kit controlled by wall thermostat (see page 25).

Optional: hot air gravity distribution kit traditional or modern style. (see page 25).



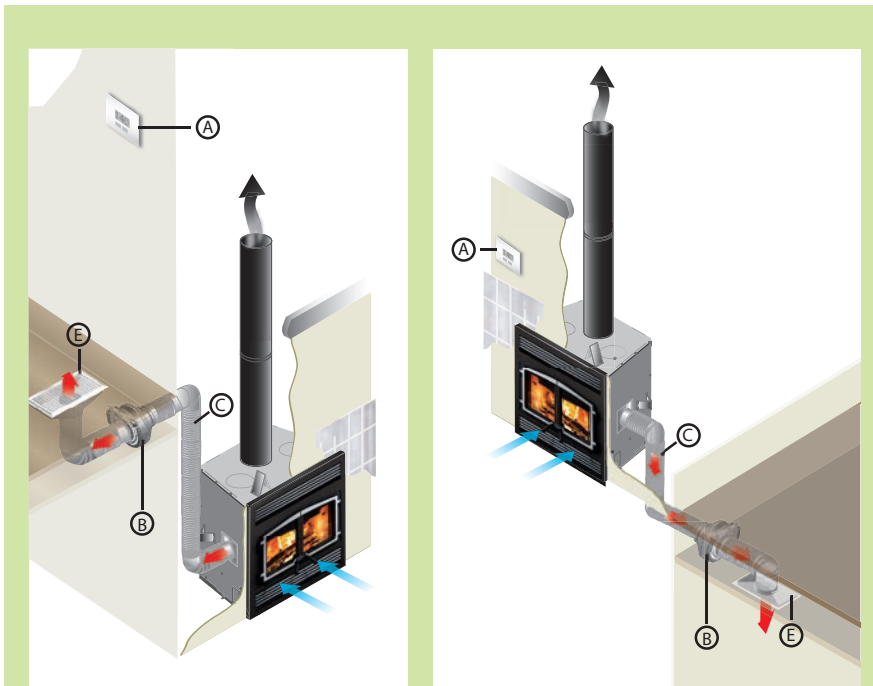
Twin premium quality heat activated 120 CFM blowers included.

Fresh air intake kit adapter 3" or 4" diameter included.

Optional: 3" flexible insulated fresh air intake pipe (10 feet).

IT'S NOW TIME TO MANAGE HEAT DISTRIBUTION!

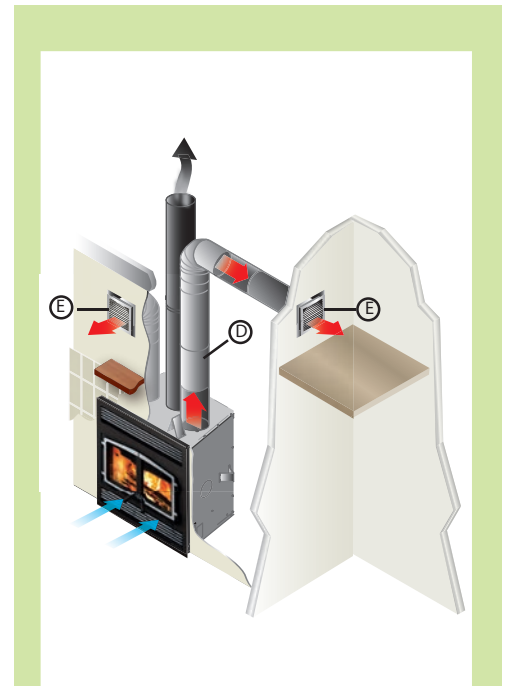
EPA certified wood fireplaces generate a lot of heat. For the most part, they generate too much for the room where they are located. Therefore, you need to manage the excess heat and send it where it is needed. To provide a solution, our research and development laboratory has designed the Heat Management System, an innovative technology that allows the recovery of the heat produced during combustion to redirect it into distribution ducts to heat other areas in your home.



Forced Air Distribution Kit

This system allows you to manage the heat distribution automatically. Using a wall thermostat, you can select the temperature you want to maintain in the room where the fireplace is located. Once the thermostat is satisfied, the excess heat is redirected to another room up to 50 feet (15 m) away from the fireplace using a 300 CFM blower. That way, you can enjoy a nice fire in your living room without the discomfort of excess heat generated by your Osburn fireplace.

The system can also be used to supplement heat in a room remote from the fireplace. For this type of application, the thermostat needs to be positioned in the desired room and programmed with the temperature to be maintained. The system, now in "heat mode", will activate the blower as long as the temperature in the remote room is not achieved and that the fireplace has enough heat to distribute.



Osburn also offers you another way to distribute excess heat into your home with the help of a Hot Air Gravity Distribution Kit.

Hot Air Gravity Distribution Kit

The Hot Air Gravity Distribution Kit allows you to bring hot air into the same room as the fireplace, in adjacent rooms, or up-stairs at a maximum distance of 10' (3 m). The minimum height of the hot air duct must be 68" (1.7 m) measured from the floor to the top of the hot air register.

Suggested installation: A) Wall thermostat B) 300 CFM blower C) Hot air flexible pipe D) Hot air rigid pipe E) Air register.

The information contained in this page is for information purposes only. For a detailed part list of kits content, please refer to the owner's manuals.

For more details about the installation requirement of the **Forced Air Distribution Kit** or the **Hot Air Gravity Distribution Kit**, visit www.osburn-mfg.com/en/service-support/heat-distribution-system

SPECIFIC FEATURES: ZERO CLEARANCE WOOD FIREPLACE

MODEL	STRATFORD
Color	Metallic black
Maximum burn time (note 1)	8 to 9 hours
Combustion technology	Non-Catalytic
Recommended heating area (note 1)	750 to 2,100 sq. ft. (with forced air distribution kit)
Recommended heating area - Maximum output - EPA test wood (BTU/h)	30,450
Recommended heating area - Maximum output - seasoned cord wood (BTU/h)	75,000
Door opening dimensions (W x H)	25 1/2" x 10 7/8"
Firebox dimensions (W x D x H)	20 7/8" x 12 7/8" x 12"
Firebox volume	2.5 cu. ft.
Average particulate emissions rate	4.4 g/h
Glass viewing area (W x H)	22 1/4" x 12 3/8"
Door frame	Double cast iron with logo
Maximum log length	21"
Log positioning	East - West
Optimum efficiency	77%
Mobile home approved	No
Flue spigot diameter	6"
Glass type	Ceramic glass
Adjustable handle	Yes
Self-cleaning glass system	Yes
Warranty	Lifetime, limited
Test standard - Safety	ULC S610 / UL 127
Test standard - Emissions / efficiency	EPA / CSA B415.1

Exterior dimensions (including spacers) and weight

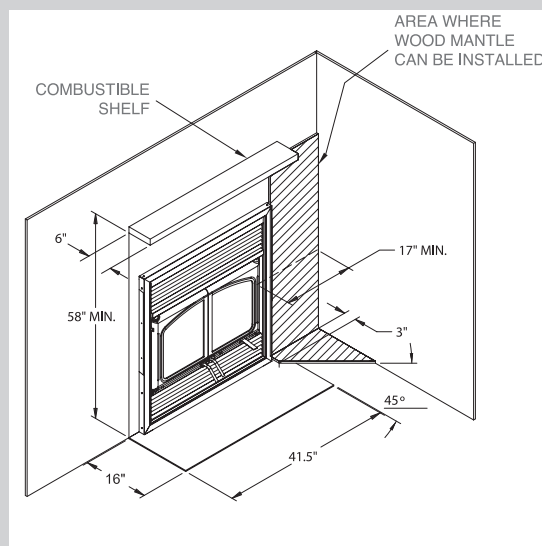
Height	47 1/8"
Width	37 7/8"
Depth	29 5/8"
Weight	416 lb (189 kg)

Clearances to combustible materials (see image below)

Side wall	17"
Back wall	0"
Sides	0"
Floor	0"
Ceiling	80"
Combustible shelf (from bottom of fireplace)	58"
Side mantle	3"
Non combustible surround (top)	0"
Non combustible surround (sides)	0"

Options

Black or brushed nickel plated door overlay	Optional
Faceplate; traditional, traditional with brushed nickel accent or Prairie Style	Optional
Hot air gravity distribution kit (see page 25)	Optional
Forced air distribution kit (see page 25)	Optional
Rigid fire screen	Optional



Listed chimneys, manufacturers, brands and types (see note 2): zero clearance wood fireplace

MANUFACTURERS	BRANDS	TYPES	INNER DIAMETER
Selkirk	Ultra-Temp (UT)	1" Solid Pack	6"
Selkirk	Super Pro (SPR)	1" Solid Pack	6"
Selkirk	Super Vent (JSC)	1" Solid Pack	6"
Selkirk	Hart & Cooley (TLC)	1" Solid Pack	6"
Selkirk	Sure-Temp (ST)	1" Solid Pack	6"
Selkirk	CF Sentinel (CF)	2" Solid Pack	6"
Selkirk	Super Pro 2100 (ALT)	2" Solid Pack	6"
Selkirk	Super Vent 2100 (JM)	2" Solid Pack	6"
Selkirk	UltimateOne	1" Solid Pack	6"
Security Chimney	ASHT+	1" Solid Pack	6" or 7"
Security Chimney	S-2100 +	2" Solid Pack	6" or 7"
Simpson Dura Vent	Dura Tech	1" Solid Pack	6"
Simpson Dura Vent	Dura Plus HTC	2" Solid Pack	6"
Simpson Dura Vent	Dura Plus	AC Triple Wall	6"
ICC	Excel 2100	1" Solid Pack	6"
Metal Fab	Temp Guard	1" Solid Pack	6"
American Metal	HSS	AC Triple Wall	6"
American Metal	HS	AC Triple Wall	6"
Olympia Chimney	Ventis	1" Solid Pack	6"
FMI (USA only)	AC	AC Triple Wall	6"

Note 1: Recommended heating area and maximum burn time may vary subject to location in home, chimney draft, heat loss factors, climate, fuel type and other variables. The recommended heated area for a given appliance is defined by the manufacturer as its capacity to maintain a minimum acceptable temperature in the designated area in case of a power failure.

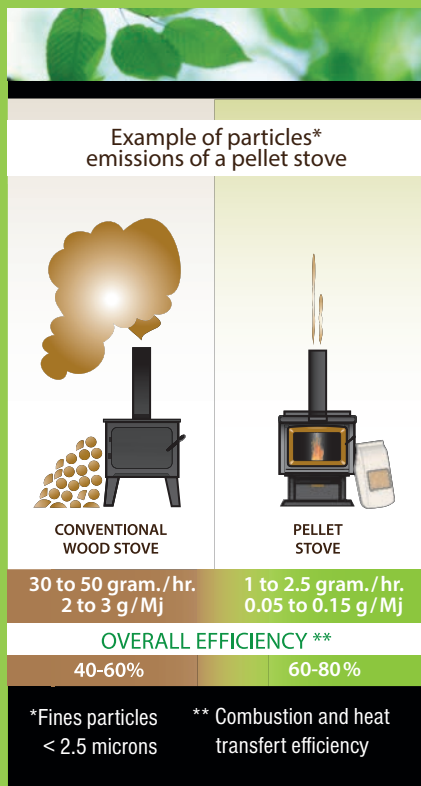
Note 2: Specific components may be required depending on the chimney manufacturer.

Technical data contained in this brochure are for reference only. Any installation must be done according to the data and drawings detailed in the Owner's manual.

ABOUT PELLET HEATING

Pellet stoves offer a dramatic improvement in the convenience of heating with solid fuel. Wood pellets are handled in bags and are therefore easily and cleanly stored. A single loading of a pellet stove can provide long hours of warmth. Pellet stoves also provide a special comfort associated with wood burning. The combination of fans delivering warm air currents and the direct comfort of radiant heat provides special satisfaction on a cold winter day. The heat provided is even and constant, due to the auto fuel feed responding to owner settings. Pellet stoves also offer strong environmental benefits; pellets not only reduce dependence on finite supplies of fossil fuels like oil and gas, but they also put to good use materials that would otherwise unnecessarily and expensively add to our waste disposal problems.

In addition, pellet stoves burn very cleanly and offer the lowest emissions of unwanted pollutants of all solid fuel burning appliances.



TOP 10 REASONS FOR BUYING A PELLET STOVE

- Fuel is relatively cheap, easy to handle and store.
- Installation is relatively inexpensive and flexible.
- Can be thermostatically controlled.
- Can run for long hours without the need to refuel.
- Heat output is steady because fuel feed is regulated.
- Provides powerful convection heat.
- Has the lowest emissions of all solid fuels.
- Reduces our dependence on fossil fuels.
- Pellets are a renewable fuel.
- Wood pellets are made of 100% residual matter (saw dust). This creates added-value from waste that would otherwise end up in a landfill.



Size

Fuel

Recommended heating area

Maximum heat output

M



500 – 2,000 sq. ft.*

45,000 BTU/h*



Volta

Emissions
2.5 g/h

Optimum efficiency
75%

Volta pellet stove with optional LCD touch screen sliding system.

BEYOND

INNOVATION

The Volta, Osburn's newest pellet stove, is a quiet and contemporary model. Its innovative components use direct current (DC) and can now operate using the optional 24 volt auxiliary battery system in the event of a power interruption. The unit can also be easily connected to solar panels or other secondary source of renewable energy. The Volta is the complete package, an environmentally friendly heater that delivers power, efficiency, reliability and cleanliness.



Optional: 24V (2 X 12V) battery kit.

Loading capacity:
60 lb.

Thermostatic or manual modes.



Optional: battery holder kit.

Full size ash drawer.

Exterior dimensions:
41 1/8" H
21 3/4" W
28 1/8" D



LCD touch-screen control included.



Optional: LCD touch-screen sliding system.



Convection fans up to 220 CFM included.

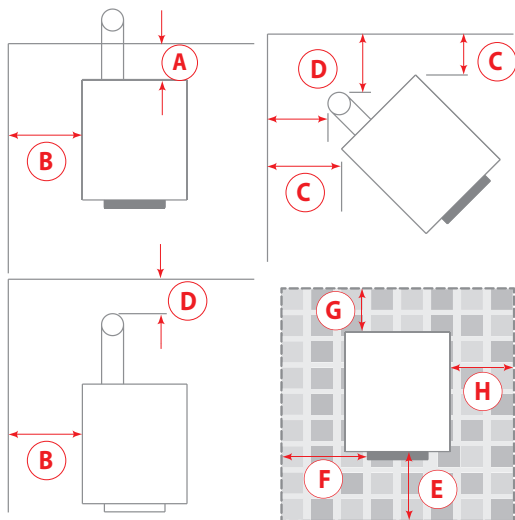
Optional: 3" fresh air intake kit.



Optional: 3", 10 feet, flexible insulated fresh air intake pipe.

GENERAL FEATURES: PELLET STOVE

MODEL	Osburn Volta
Color	Metallic black
Maximum burn time (note 1)	50 hours
Recommended heating area (note 1)	500 - 2,000 sq. ft.
Maximum heat output - BTU/h (note 3)	45,600 BTU/h (13.4 kW)
Minimum heat output - BTU/h (note 3)	10,000 BTU/h (3 kW)
Loading capacity (note 2)	60 lb (27 kg)
Choice of thermostatic or manual mode	Yes
Combustion technology	Bottom-feed
Number of intensity levels	Variable
Electronic igniter	Yes
Door viewing area (W x H)	5 3/4" x 10"
Approved vent diameter	3"
Glass type	Ceramic glass
Ash drawer	Yes
Mobile home approved (note 3)	Yes
Approved for an alcove installation	Yes
Warranty	Limited lifetime
Average particulate emissions rate	2.5 g/h
Overall efficiency	75%
Noise level at 6 feet	Min: 42 dBa (+/- 3 dBa) – Max: 49 dBa (+/- 3 dBa)
Test standard - safety	ULC S627, CSA B365, ASTM E1509, UL 1482, NFPA 211
Test standard - emissions	EPA / CSA B415.1-10
Exterior dimensions and weight	
Height	41 1/8"
Width	21 3/4"
Depth	28 1/8"
Weight	406 lb (184 kg)
Options	
24V (2 X 12V) Battery kit	Optional
Battery holder kit	Optional
LCD touch screen sliding system	Optional
Other	
3" Fresh air intake kit	Optional
3" Fresh air intake adapter	Included



CLEARANCES TO COMBUSTIBLE MATERIALS*		
	CANADA	USA
A**	1"	1"
B	4"	4"
C	1"	1"
D	Refer to vent manufacturer's clearances	Refer to vent manufacturer's clearances
FLOOR PROTECTION		
E	18"	6"
F	N/A (USA only)	6"
G	8"	N/A (Canada only)
H	8"	N/A (Canada only)

CAUTION:
THE STOVE MUST BE PLACED ON A CONTINUOUS (GROUTED JOINTS) NON COMBUSTIBLE MATERIAL SUCH AS CERAMIC TILE***, CEMENT BOARD, BRICK, MILLBOARD OR EQUIVALENT, OR ANY OTHER APPROVED OR LISTED MATERIAL SUITED FOR FLOOR PROTECTION.

*** Any type of tile will require a continuous non combustible sheet beneath to prevent the possibility of embers falling through to the combustible floor if cracks or separation should occur in the finished surface, this would include floor protection for built-in raised hearths. Check local codes for approved alternatives.

* We recommend leaving 24" on each side of the stove and 12" at the back of the stove in order to facilitate access for maintenance.

** From the rear panel.

Note 1: Recommended heating area and maximum burn time may vary subject to location in home, chimney draft, heat loss factors, climate, fuel type, feed rate, fuel level, and other variables. The recommended heated area for a given appliance is defined by the manufacturer as its capacity to maintain a minimum acceptable temperature considering that the space configuration and the presence of heat distribution systems have a significant impact in making heat circulation optimum.

Note 2: May vary depending on pellet size and/or density.

Note 3: Fresh air intake kit required.

Technical data contained in this brochure are for reference only. Any installation must be done according to the data and drawings detailed in the Owner's manual.

Size

Fuel

Recommended heating area

Maximum heat output

L



750 – 2,400 sq. ft.*

50,000 BTU/h



EPA
≤4.5 g/h



5000

Emissions
2.18 g/h

Optimum efficiency
78%

5000 pellet stove with
black door overlay.

BEYOND

INNOVATION

The Osburn 5000 pellet stove is the result of Osburn's evolution in the design of advanced combustion systems using solid fuel sources. With its bottom feed technology, the Osburn 5000 offers an impressive reliability and flexibility regardless of the type of pellets you burn. The touch-screen control panel provides infinite possibilities while keeping the operation surprisingly simple. The clean and vertical look of the Osburn 5000 brings a modern touch to your decor without any compromise on the heat output and efficiency.



Required accessory: black or brushed nickel plated cast iron door overlay.

Loading capacity:
70 lb.

Thermostatic or manual modes.



Premium quality 120 CFM blower included.

Full size ash drawer.

Exterior dimensions:
36 1/2" H
23 5/8" W
31 1/2" D



LCD touch-screen control included.



Optional: 3" fresh air intake kit.

Optional: 3", 10 feet, flexible insulated fresh air intake pipe.

GENERAL FEATURES: PELLET STOVE

MODEL	Osburn 5000
Color	Metallic black
Maximum burn time (note 1)	40 hours
Recommended heating area (note 1)	750 to 2,400 sq. ft
Maximum heat output - BTU/h (note 3)	50,000
Minimum heat output - BTU/h (note 3)	8,500
Loading capacity (note 2)	70 lb (32 Kg)
Choice of thermostatic or manual mode	Yes
Combustion technology	Bottom-feed
Number of intensity levels	Variable
Electronic igniter	Yes
Glass viewing area (W x H)	13 1/8" x 10 7/8"
Approved vent diameter	3" or 4" (as per ELV)
Glass type	Ceramic glass
Ash drawer	Yes
Mobile home approved (note 3)	Yes
Warranty	Limited lifetime
Average particulate emissions rate	2.18 g/h
Optimum efficiency	78 %
Noise level at 6 feet	Min: 47 dBa (+/- 3 dBa) – Max: 52 dBa (+/- 3 dBa)
Test standard - safety	ULC S627, CSA B365, ASTM E1509, UL 1482, NFPA 211
Test standard - emissions	EPA / CSA B415.1
Exterior dimensions and weight	
Height	36 1/2"
Width	23 5/8"
Depth	31 1/2"
Weight	426 lb (193 kg)
Options	
Black door overlay	Optional
Brushed nickel plated door overlay	Optional
Other	
3" Fresh air intake kit	Optional
3" Fresh air intake adapter	Included

CLEARANCES TO COMBUSTIBLE MATERIALS*		
	CANADA	USA
A**	3"	3"
B	4"	4"
C	3"	3"
D	Refer to vent manufacturer's clearances	Refer to vent manufacturer's clearances
FLOOR PROTECTION		
E	18"	6"
F	N/A (USA only)	6"
G	8"	N/A (Canada only)
H	8"	N/A (Canada only)

CAUTION:
THE STOVE MUST BE PLACED ON A CONTINUOUS (GROUTED JOINTS) NON COMBUSTIBLE MATERIAL SUCH AS CERAMIC TILE***, CEMENT BOARD, BRICK, MILLBOARD OR EQUIVALENT, OR ANY OTHER APPROVED OR LISTED MATERIAL SUITED FOR FLOOR PROTECTION.

*** Any type of tile will require a continuous non combustible sheet beneath to prevent the possibility of embers falling through to the combustible floor if cracks or separation should occur in the finished surface, this would include floor protection for built-in raised hearths. Check local codes for approved alternatives.

* We recommend leaving 24" on each side of the stove and 12" at the back of the stove in order to facilitate access for maintenance.

** From the fresh air intake.

Note 1: Recommended heating area and maximum burn time may vary subject to location in home, chimney draft, heat loss factors, climate, fuel type, feed rate, fuel level, and other variables. The recommended heated area for a given appliance is defined by the manufacturer as its capacity to maintain a minimum acceptable temperature considering that the space configuration and the presence of heat distribution systems have a significant impact in making heat circulation optimum.

Note 2: May vary depending on pellet size and/or density.

Note 3: Fresh air intake kit required.

Technical data contained in this brochure are for reference only. Any installation must be done according to the data and drawings detailed in the Owner's manual.

Size	Fuel	Recommended heating area	Maximum heat output	 
L		1,000 — 2,800 sq. ft. *	70,000 BTU/h	



7000 pellet stove with brushed nickel plated door overlay.	Emissions 2.45 g/h	Optimum efficiency 79.9%	7000
--	-----------------------	-----------------------------	-------------

Osburn increases its leadership in the wood pellet stove market with the Osburn 7000. This stove, which uses a bottom-feed combustion technology, has an impressive hopper capacity of 125 pounds and offers a combustion time of up to 90 hours. Leading edge, the Osburn 7000 has a convenient and intuitive touch screen display offering a world of possibilities to the user. In addition to having a clean line, contemporary design, the Osburn 7000 offers three choices of door overlays to complete its style. This pellet stove, which can produce up to 70,000 BTU/h, can be fitted with a hot air distribution kit to optimize heat distribution throughout the house using a powerful 465 CFM blower.

**BEYOND
INNOVATION**



Required accessory: black or brushed nickel plated cast iron door overlay.

Loading capacity:
125 lb.

Thermostatic or manual modes.



Premium quality 465 CFM convection blower included.

Full size ash drawer.

Exterior dimensions:
41 1/4" H
24" L
34 1/2" D



LCD touch-screen control included.



Optional: 3" fresh air intake kit.

Optional: 3", 10 feet, flexible insulated fresh air intake pipe.



Optional: hot air distribution kit.

*See the complete technical data on page 33.
**See note 3 on page 33.

GENERAL FEATURES: PELLET STOVE

MODEL	Osburn 7000
Color	Metallic black
Maximum burn time (note 1)	92 hours
Recommended heating area (note 1)	1,000 to 2,800 sq. ft.
Maximum heat output - BTU/h (note 3)	70,000
Minimum heat output - BTU/h (note 3)	10,500
Loading capacity (note 2)	125 lb (57 Kg)
Choice of thermostatic or manual mode	Yes
Combustion technology	Bottom-feed
Number of intensity levels	Variable
Electronic igniter	Yes
Glass viewing area (W x H)	13 1/8" x 10 7/8"
Approved vent diameter	3" or 4" (as per ELV)
Glass type	Ceramic glass
Ash drawer	Yes
Mobile home approved (note 3)	Yes
Warranty	Limited lifetime
Average particulate emissions rate	2.45 g/h
Optimum efficiency	79.9 %
Noise level at 6 feet	Min: 47 dBa (+/- 3 dBa) – Max: 52 dBa (+/- 3 dBa)
Test standard - safety	ULC S627, CSA B365, ASTM E1509, UL 1482, NFPA 211
Test standard - emissions	EPA / CSA B415.1
Exterior dimensions and weight	
Height	41 1/4"
Width	24"
Depth	34 1/2"
Weight	463,2 lb (210 kg)
Options	
Black door overlay	Optional
Brushed nickel plated door overlay	Optional
Hot air distribution kit	Optional
Other	
3" Fresh air intake kit	Optional
3" Fresh air intake adapter	Included

CLEARANCES TO COMBUSTIBLE MATERIALS*		
	CANADA	USA
A**	3"	3"
B	6"	6"
C	3"	3"
D	Refer to vent manufacturer's clearances	Refer to vent manufacturer's clearances
FLOOR PROTECTION		
E	18"	6"
F	N/A (USA only)	6"
G	8"	N/A (Canada only)
H	8"	N/A (Canada only)

CAUTION:
THE STOVE MUST BE PLACED ON A CONTINUOUS (GROUTED JOINTS) NON COMBUSTIBLE MATERIAL SUCH AS CERAMIC TILE***, CEMENT BOARD, BRICK, MILLBOARD OR EQUIVALENT, OR ANY OTHER APPROVED OR LISTED MATERIAL SUITED FOR FLOOR PROTECTION.

*** Any type of tile will require a continuous non combustible sheet beneath to prevent the possibility of embers falling through to the combustible floor if cracks or separation should occur in the finished surface, this would include floor protection for built-in raised hearths. Check local codes for approved alternatives.

* We recommend leaving 24" on each side of the stove and 12" at the back of the stove in order to facilitate access for maintenance.

** From the fresh air intake.

Note 1: Recommended heating area and maximum burn time may vary subject to location in home, chimney draft, heat loss factors, climate, fuel type, feed rate, fuel level, and other variables. The recommended heated area for a given appliance is defined by the manufacturer as its capacity to maintain a minimum acceptable temperature considering that the space configuration and the presence of heat distribution systems have a significant impact in making heat circulation optimum.

Note 2: May vary depending on pellet size and/or density.

Note 3: Fresh air intake kit required.

Technical data contained in this brochure are for reference only. Any installation must be done according to the data and drawings detailed in the Owner's manual.

FIREPLACE TOOL SETS



CODE : #AC02620



CODE : #AC02621



CODE : #AC02622



CODE : #AC02623

DUPLEX	INEO	PAPYRUS	TORSADE
<p>Contains four instruments: poker, broom, shovel and clamp. The clean lines and combination of steel and wood construction make a strong contemporary design statement.</p> <p>Height of accessories: 19 1/2" (50 cm)</p> <p>Made in France.</p>	<p>Contains four instruments: poker, broom, shovel and clamp. The clean lines and simplicity make a strong contemporary design statement.</p> <p>Height of accessories: 19 1/2" (50 cm)</p> <p>Made in France.</p>	<p>Contains four instruments: poker, broom, shovel and clamp. The dramatic use of steel makes a strong contemporary design statement.</p> <p>Height of accessories: 19 1/2" (50 cm) Base diameter: 7 1/2" (19 cm)</p> <p>Made in France.</p>	<p>Contains four instruments: poker, broom, shovel and clamp. The elegant curved steel makes a strong contemporary design statement.</p> <p>Height of stand: 22 1/2" (57 cm) Base diameter: 7 1/2" (19 cm)</p> <p>Made in France.</p>



CODE : #AC02624



CODE : #AC02625



CODE : #AC02627



CODE : #AC02350

ABRIK	SILHOUETTE	FUSIO LOG HOLDER	EQUISS LOG HOLDER
<p>Contains four instruments: poker, broom, shovel and clamp. The clean lines and the geometric sides and base make a strong contemporary design statement.</p> <p>Height of stand: 22 1/2" (57 cm) Dimensions of square base: 7" (18 cm) X 7" (18 cm)</p> <p>Made in France.</p>	<p>Contains four instruments: poker, broom, shovel and clamp. The simple yet dramatic shape, along with stainless steel handles, make a strong contemporary design statement.</p> <p>Height of stand: 22 1/2" (55 cm) Length: 13 1/4" (34 cm) Depth: 6" (15 cm)</p> <p>Made in France.</p>	<p>This distinctive log holder combines steel and beech wood, and can be set in two positions. Its curved shape makes a strong contemporary design statement. Make your life simpler by fueling your fire without ever being caught unprepared.</p> <p>Height: 22 1/2" (55 cm) Length: 18 1/2" (47 cm) Depth: 22 1/2" (55 cm) Weight: 17 1/2 lb (8 kg)</p> <p>Made in France.</p>	<p>Made of high quality steel. Its integrated handles make handling easier. Two identical parts that intersect easily. Assembly and disassembly in seconds for compact storage.</p> <p>Height: 15 1/4" (38 cm) Length: 24 1/4" (61 cm) Depth: 13" (33 cm) Weight: 28 1/2 lb (13 kg)</p> <p>Made in Canada.</p>



**SCHOTT
ROBAX®**

OSBURN LIMITED LIFETIME WARRANTY



on Robax Ceramic Glass

The OSBURN-SCHOTT ROBAX system is one of the highest quality glass and heater product combination on the market. This allows OSBURN to offer a Limited Lifetime Warranty on Robax ceramic glass for all OSBURN appliances.

Conducted consumer studies identify that people want an unobstructed view of the fire, but without compromising safety. The glass “shield” is seen as the needed protection from the fire’s unpredictable aspects. OSBURN chose the SCHOTT ROBAX solution delivering all of the benefits that a consumer wants out of a fire but without the risks associated to it.

Because the way the entire system works together (SCHOTT ROBAX ceramic glass and OSBURN technology), it is the most efficient glass solution available in the market given its high IR transmission values and its high temperature resistance. A high IR transmission means that the heat produced inside the firebox is transferred through the glass more efficiently. The OSBURN-SCHOTT ROBAX ceramic glass can withstand the highest temperatures of any glass on the market.

For more details go to:

www.osburn-mfg.com

PUB047A

